

## Student Satisfaction Survey 2022-23

### Criteria: Teaching-Learning and Evaluation

Instructions to fill the questionnaire

- All questions should be compulsorily attempted
- Each question has five responses, choose the most appropriate one

A) Please confirm this is the first and only time you answer this survey.

a) Yes

b) No

B) Age:

C) College Name:

D) What degree program are you pursuing now?

- |                               |   |
|-------------------------------|---|
| a) Bachelor's                 | <input style="width: 50px; height: 15px;" type="text"/> |
| b) Master's                   | <input style="width: 50px; height: 15px;" type="text"/> |
| c) Bachelor's + Add on course | <input style="width: 50px; height: 15px;" type="text"/> |
| d) Bachelor's (Vocational)    | <input style="width: 50px; height: 15px;" type="text"/> |
| e) Other                      | <input style="width: 50px; height: 15px;" type="text"/> |

E) What subject are you currently pursuing?

- |   |   |
|---|---|
| a) Arts   | <input style="width: 50px; height: 15px;" type="text"/> |
| b) Commerce                                       | <input style="width: 50px; height: 15px;" type="text"/> |
| c) Medical/Non-medical/Home science/Biotechnology | <input style="width: 50px; height: 15px;" type="text"/> |
| d) BBA  | <input style="width: 50px; height: 15px;" type="text"/> |
| e) Other  | <input style="width: 50px; height: 15px;" type="text"/> |

Q 1) How much of the syllabus was covered in the class?

4- 85 to 100%

3- 70 to 84%

2- 55 to 69%

1-30 to 54%

0-Below 30%

Q 2) How well did the teachers prepare for the classes?

- 4-Thoroughly
- 3-Satisfactorily
- 2-Poorly
- 1-Indifferently
- 0-Won't teach at all

Q3) How well were the teachers able to communicate?

- 4-Always effective
- 3-Sometimes effective
- 2-Just satisfactorily
- 1-Generally ineffective
- 0-Very poor communication

Q4) How will you rate the teacher's in depth knowledge of subject?

- 4-Excellent
- 3-Very good
- 2-Good
- 1-Fair
- 0-Poor

Q5) How fair was the internal evaluation process by the teachers?

- 4-Always fair
- 3-Usually fair
- 2-Sometimes Unfair
- 1-Usually unfair
- 0-Unfair

Q6) Were the requirements and evaluation criteria of the course clearly defined?

- 4-Everytime
- 3-Usually
- 2-Occasionally / sometimes
- 1-Rarely

0-Never

Q 7) Does the institute take active interest in promoting exposure through educational trips?

4-Regularly

3-Often

2-Sometimes

1-Rarely

0-Never

Q8) Is the teaching and learning process in your institution helpful in cognitive, social and emotional growth?

4-Significantly

3-Very well

2-Moderately

1-Marginally

0-Not at all

Q9) Does the institution provides multiple opportunities to learn and grow?

4-Strongly agree

3-Agree

2-Neutral

1-Disagree

0-Strongly disagree

Q10) Do the teachers inform you about your expected competencies, course outcomes and programme outcomes?

4-Everytime

3-Usually

2-Occasionally / sometimes

1-Rarely

0-Never

Q 11) Does your teacher do a necessary follow up with an assigned task to you?

4-Everytime

3-Usually

2-Occasionally / sometimes

1-Rarely

0-Never

Q12) Do the teachers illustrate the concepts through examples and applications?

4-Everytime

3-Usually

2-Occasionally / sometimes

1-Rarely

0-Never

Q 13) Do the teachers identify your strengths and encourage you with providing right level of challenges

4-Fully

3-Reasonably

2-Partially

1-Slightly

0-Unable to

Q 14) Are your teachers able to identify your weaknesses and help you to overcome them?

4-Everytime

3-Usually

2-Occasionally / sometime

1-Rarely

0-Never

Q 15) Does the institution make effort to engage students in the monitoring, review and continuous quality improvement of the teaching learning process?

4-Strongly agree

3-Agree

2-Neutral

1-Disagree

0-Strongly Disagree

Q 16) Do the teachers use student centric methods such as participative learning and problem solving methodologies for enhancing learning experiences?

4-To a great extent

3-Moderate

2-Somewhat

1-Very little

0-Not at all

Q 17) Do your teachers encourage you to participate in extracurricular activities?

4-Strongly agree

3-Agree

2-Neutral

1-Very little

0-Not at all

Q 18) Are efforts made by the institute / teachers to inculcate soft skills, life skills and employability skills to make you ready for the world of work?

4-To a great extent

3-Moderate

2-Somewhat

1-Very little

0-Not at all

Q19) What %age of teachers take up academic problems of the students beyond the classroom?

4-Above 90%

3-70 to 89%

2-50 to 69%

1-30 to 49%

0-Below 29%

Q 20) Is the overall quality of teaching-learning process in your institute very good?

4-Strongly agree

3-Agree

2-Neutral

1-Disagree

0-Strongly disagree

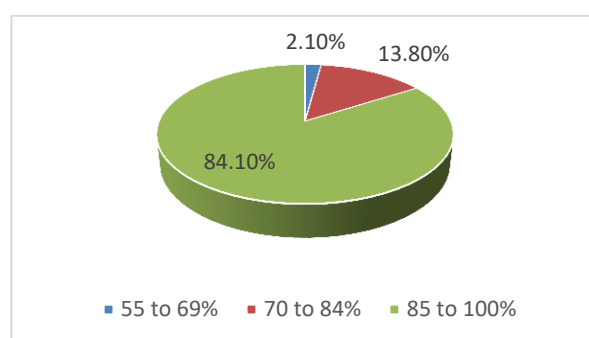
Q 21) Give observations / suggestions to improve the overall teaching – learning experience in your institution.

### Feedback Analysis From Students based on SSS

**The feedback obtained from students is analysed and reported. Responses of 195 respondents were analysed. SPSS software is used for analysis of the statistical data. The report prepared is used to identify weak points and take steps to improve them.**

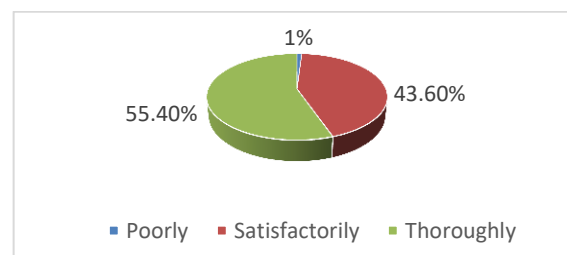
Q1) How much of the syllabus was covered in the class?

Particulars	Frequency	%	Mean	Rating
55 to 69%	4	2.1	3.8205	Excellent
70 to 84%	27	13.8		
85 to 100%	164	84.1		
Total	195	100.0		



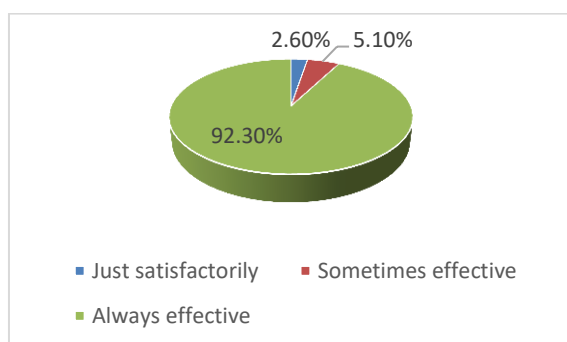
Q2) How well did the teachers prepare for the classes?

Particulars	Frequency	%	Mean	Rating
Poorly	2	1	3.5436	Excellent
Satisfactorily	85	43.6		
Thoroughly	108	55.4		
Total	195	100		



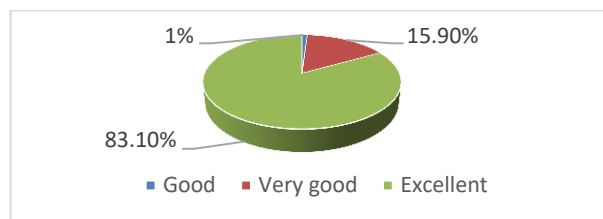
3) How well were the teachers able to communicate?

Particulars	Frequency	%	Mean	Rating
Just satisfactorily	5	2.6	3.8974	Excellent
Sometimes effective	10	5.1		
Always effective	180	92.3		
Total	195	100		



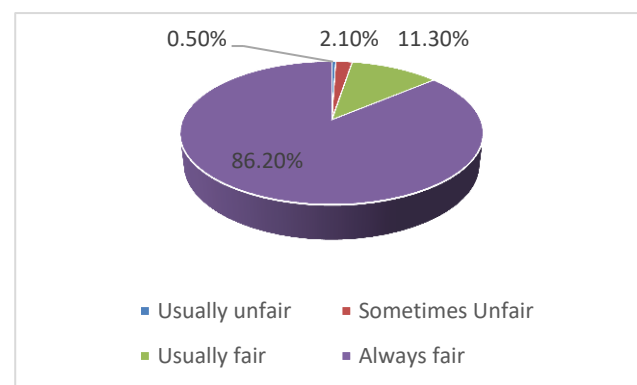
Q4) How will you rate the teacher's in depth knowledge of subject?

Particulars	Frequency	%	Mean	Rating
Good	2	1	3.8205	Excellent
Very good	31	15.90		
Excellent	162	83.10		
Total	195	100		



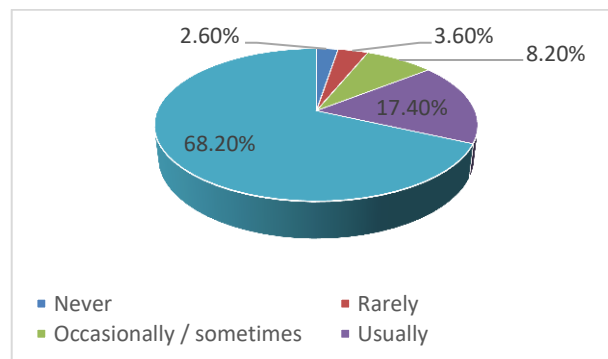
Q5) How fair was the internal evaluation process by the teachers?

Particulars	Frequency	%	Mean	Rating
Usually unfair	1	0.5	3.8308	Excellent
Sometimes Unfair	4	2.1		
Usually fair	22	11.3		
Always fair	168	86.2		
Total	195	100		



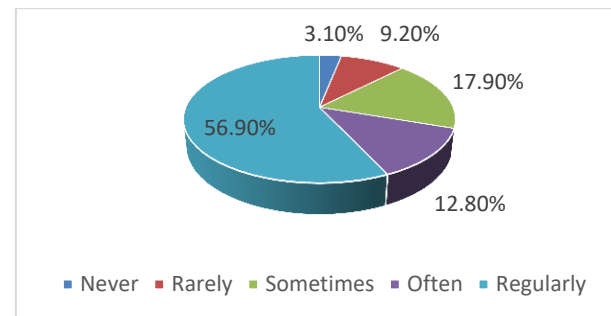
Q6) Were the requirements and evaluation criteria of the course clearly defined?

Particulars	Frequency	%	Mean	Rating
Never	5	2.6	3.4513	Excellent
Rarely	7	3.6		
Occasionally / sometimes	16	8.2		
Usually	34	17.4		
Everytime	133	68.2		
Total	195	100		



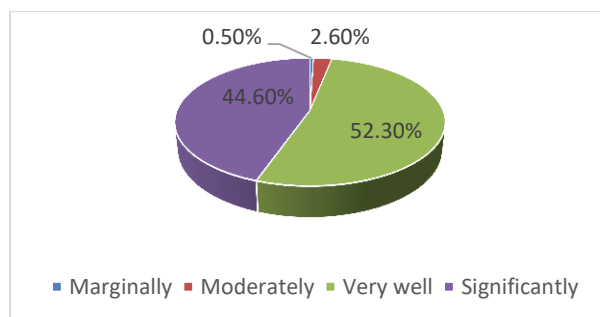
Q7) Does the institute take active interest in promoting exposure through educational trips?

Particulars	Frequency	%	Mean	Rating
Never	6	3.1	3.1128	Excellent
Rarely	18	9.2		
Sometimes	35	17.9		
Often	25	12.8		
Regularly	111	56.9		
Total	195	100		



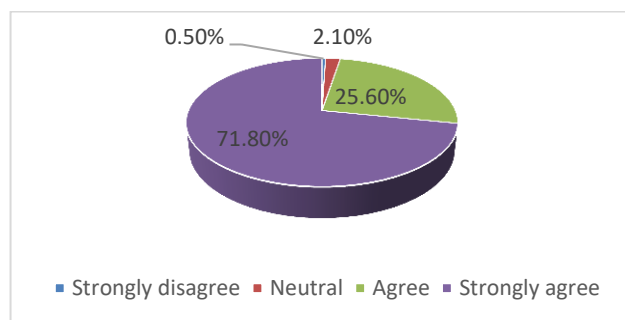
Q8) Is the teaching and learning process in your institution helpful in cognitive, social and emotional growth?

Particulars	Frequency	%	Mean	Rating
Marginally	1	0.5	3.4103	Excellent
Moderately	5	2.6		
Very well	102	52.3		
Significantly	87	44.6		
Total	195	100		



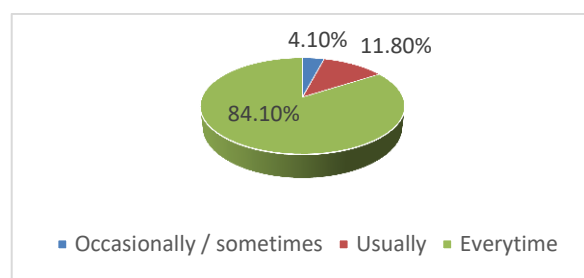
Q9) Does the institution provides multiple opportunities to learn and grow?

Particulars	Frequency	%	Mean	Rating
Strongly disagree	1	0.5	3.6821	Excellent
Neutral	4	2.1		
Agree	50	25.6		
Strongly agree	140	71.8		
Total	195	100		



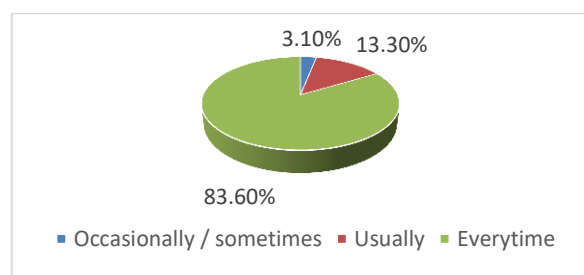
Q10) Do the teachers inform you about your expected competencies, course outcomes and program outcomes?

Particulars	Frequency	%	Mean	Rating
Occasionally / sometimes	8	4.1	3.8	Excellent
Usually	23	11.8		
Everytime	164	84.1		
Total	195	100		



Q11) Does your teacher do a necessary follow up with an assigned task to you?

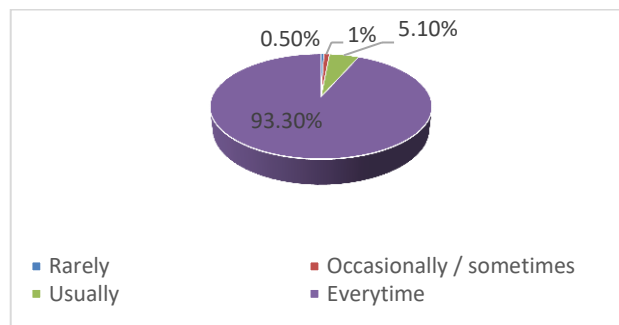
Particulars	Frequency	%	Mean	Rating
Occasionally / sometimes	6	3.1	3.8051	Excellent
Usually	26	13.3		
Everytime	163	83.6		
Total	195	100		





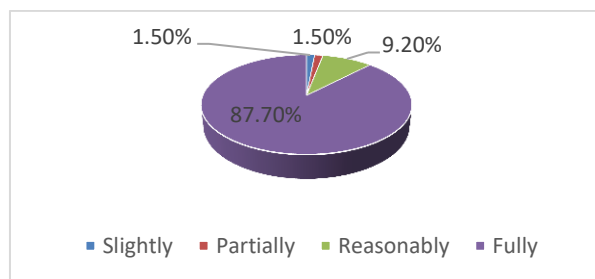
Q12) Do the teachers illustrate the concepts through examples and applications?

Particulars	Frequency	%	Mean	Rating
Rarely	1	0.5	3.9128	Excellent
Occasionally / sometimes	2	1		
Usually	10	5.1		
Everytime	182	93.3		
Total	195	100		



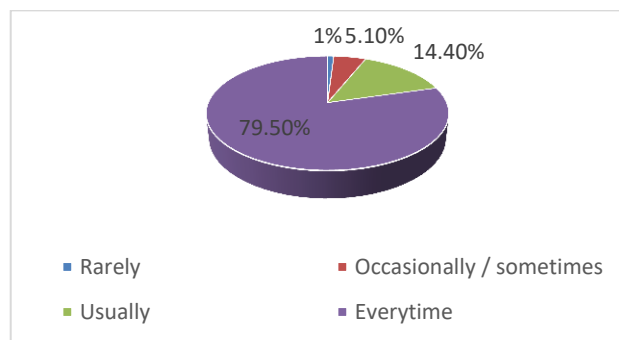
Q13) Do the teachers identify your strengths and encourage you with providing right level of challenges?

Particulars	Frequency	%	Mean	Rating
Slightly	3	1.5	3.8308	Excellent
Partially	3	1.5		
Reasonably	18	9.2		
Fully	171	87.7		
Total	195	100		



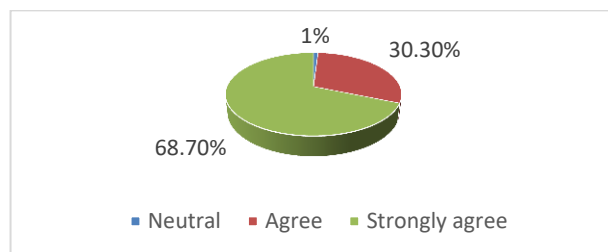
Q14) Are your teachers able to identify your weaknesses and help you to overcome them?

Particulars	Frequency	%	Mean	Rating
Rarely	2	1	3.7231	Excellent
Occasionally / sometimes	10	5.1		
Usually	28	14.4		
Everytime	155	79.5		
Total	195	100		



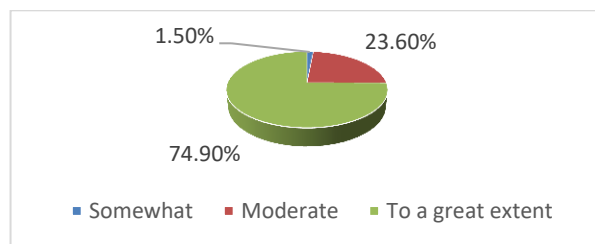
Q15) Does the institution make effort to engage students in the monitoring, review and continuous quality improvement of the teaching learning process?

Particulars	Frequency	%	Mean	Rating
Neutral	2	1	3.6769	Excellent
Agree	59	30.3		
Strongly agree	134	68.7		
Total	195	100		



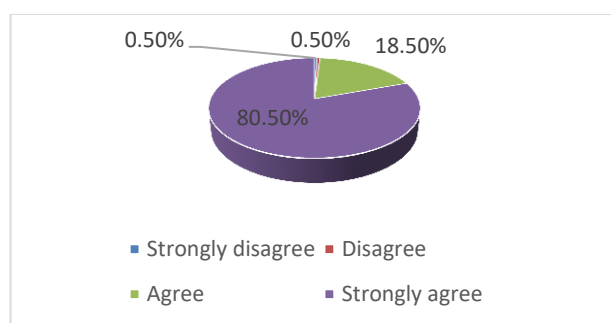
Q16) Do the teachers use student centric methods such as participative learning and problem solving methodologies for enhancing learning experiences?

Particulars	Frequency	%	Mean	Rating
Somewhat	3	1.5	3.7333	Excellent
Moderate	46	23.6		
To a great extent	146	74.9		
Total	195	100		



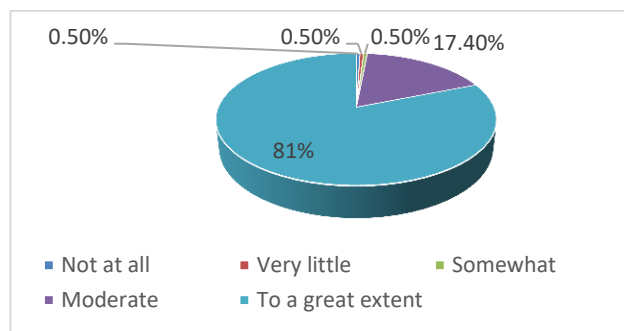
Q17) Do your teachers encourage you to participate in extracurricular activities?

Particulars	Frequency	%	Mean	Rating
Strongly disagree	1	0.5	3.7795	Excellent
Disagree	1	0.5		
Agree	36	18.5		
Strongly agree	157	80.5		
Total	195	100		



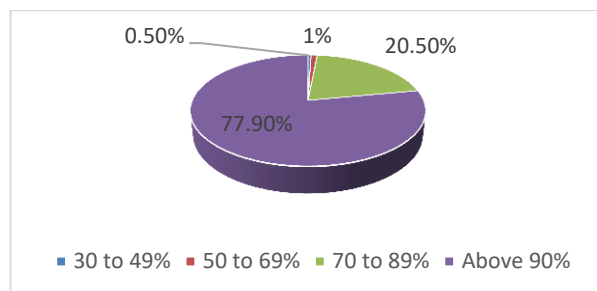
Q18) Are efforts made by the institute / teachers to inculcate soft skills, life skills and employability skills to make you ready for the world of work?

Particulars	Frequency	%	Mean	Rating
Not at all	1	0.5	3.7795	Excellent
Very little	1	0.5		
Somewhat	1	0.5		
Moderate	34	17.4		
To a great extent	158	81		
Total	195	100		



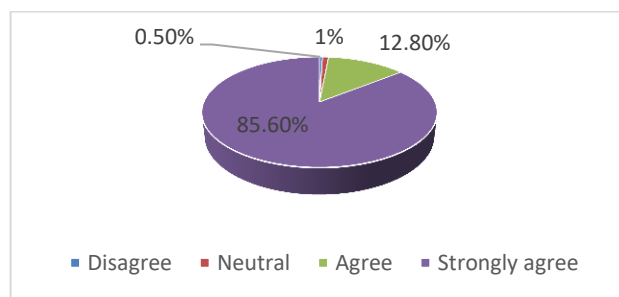
Q19) What percentage of teachers take up academic problems of the students beyond the classroom?

Particulars	Frequency	%	Mean	Rating
30 to 49%	1	0.5	3.759	Excellent
50 to 69%	2	1		
70 to 89%	40	20.5		
Above 90%	152	77.9		
Total	195	100		



Q 20) Is the overall quality of teaching-learning process in your institute very good?

Particulars	Frequency	%	Mean	Rating
Disagree	1	0.5	3.8359	Excellent
Neutral	2	1		
Agree	25	12.8		
Strongly agree	167	85.6		
Total	195	100		



### Survey Feedback From Students

#### Observation:

The mean score of all the parameters was above 3 and hence all the parameters were rated as “Excellent”.

#### Suggestions given by students:

- Students demanded value added and certificate courses.
- Frequent career counseling sessions to have more knowledge of professional courses.
- Demand for more use of digital classrooms.
- Students require training sessions regarding digital access to E-Library.
- Demand for Recorded Video Lecturer.
- Students insisted for Offline Mentorship Classes.

#### Strengths:

- Smart Classrooms and well-equipped laboratories.
- College has excellent extra-curricular activities, sports culture, well-organized extension, community service programs and outreach activities.
- Functional IQAC and Alumni association.
- Regular seminars/expert lectures are organized every year.
- Equal opportunity for girls to participate in Extra Curricular activities.
- Good teaching and learning environment supported.
- Congenial, safe & secure environment for each and every girl student.
- Students are informed about expected competencies, course outcomes and program outcomes.
- E-Library support for a wide variety of content access.
- One to One interaction between Mentor and mentee under Mentorship Meetings.