

Student Satisfaction Survey 2023-24

Criteria: Teaching-Learning and Evaluation

Instructions to fill the questionnaire

- All questions should be compulsorily attempted
- Each question has five responses, choose the most appropriate one

A) Please confirm this is the first and only time you answer this survey.

a) Yes

b) No

B) Age:

C) College Name:

D) What degree program are you pursuing now?

a) Bachelor's

b) Master's

c) Bachelor's + Add on course

d) Bachelor's (Vocational)

e) Other

E) What subject are you currently pursuing?

a) Arts

b) Commerce

c) Medical/Non-medical/Home science/Biotechnology

d) BBA

e) Other

Q1) How much of the syllabus was covered in the class?

4- 85 to 100%

3- 70 to 84%

2- 55 to 69%

1-30 to 54%

0-Below 30%

Q2) How well did the teachers prepare for the classes?

- 4-Thoroughly
- 3-Satisfactorily
- 2-Poorly
- 1-Indifferently
- 0-Won't teach at all

Q3) How well were the teachers able to communicate?

- 4-Always effective
- 3-Sometimes effective
- 2-Just satisfactorily
- 1-Generally ineffective
- 0-Very poor communication

Q4) How will you rate the teacher's in depth knowledge of subject?

- 4-Excellent
- 3-Very good
- 2-Good
- 1-Fair
- 0-Poor

Q5) How fair was the internal evaluation process by the teachers?

- 4-Always fair
- 3-Usually fair
- 2-Sometimes Unfair
- 1-Usually unfair
- 0-Unfair

Q6) Were the requirements and evaluation criteria of the course clearly defined?

- 4-Everytime
- 3-Usually
- 2-Occasionally / sometimes
- 1-Rarely
- 0-Never

Q 7) Does the institute take active interest in promoting exposure through educational trips?

4-Regularly

3-Often

2-Sometimes

1-Rarely

0-Never

Q8) Is the teaching and learning process in your institution helpful in cognitive, social and emotional growth?

4-Significantly

3-Very well

2-Moderately

1-Marginally

0-Not at all

Q9) Does the institution provide multiple opportunities to learn and grow?

4-Strongly agree

3-Agree

2-Neutral

1-Disagree

0-Strongly disagree

Q10) Do the teachers inform you about your expected competencies, course outcomes and programme outcomes?

4-Everytime

3-Usually

2-Occasionally / sometimes

1-Rarely

0-Never

Q11) Does your teacher do a necessary follow up with an assigned task to you?

4-Everytime

3-Usually

2-Occasionally / sometimes

1-Rarely

0-Never

Q12) Do the teachers illustrate the concepts through examples and applications?

4-Everytime

3-Usually

2-Occasionally / sometimes

1-Rarely

0-Never

Q 13) Do the teachers identify your strengths and encourage you with providing right level of challenges

4-Fully

3-Reasonably

2-Partially

1-Slightly

0-Unable to

Q 14) Are your teachers able to identify your weaknesses and help you to overcome them?

4-Everytime

3-Usually

2-Occasionally / sometime

1-Rarely

0-Never

Q 15) Does the institution make effort to engage students in the monitoring , review and continuous quality improvement of the teaching learning process ?

4-Strongly agree

3-Agree

2-Neutral

1-Disagree

0-Strongly Disagree

Q 16) Do the teachers use student centric methods such as participative learning and problem solving methodologies for enhancing learning experiences ?

4-To a great extent

- 3-Moderate
- 2-Somewhat
- 1-Very little
- 0-Not at all

Q 17) Do your teachers encourage you to participate in extracurricular activities ?

- 4-Strongly agree
- 3-Agree
- 2-Neutral
- 1-Very little
- 0-Not at all

Q 18) Are efforts made by the institute / teachers to inculcate soft skills, life skills and employability skills to make you ready for the world of work ?

- 4-To a great extent
- 3-Moderate
- 2-Somewhat
- 1-Very little
- 0-Not at all

Q19) What percentage of teachers take up academic problems of the students beyond the classroom ?

- 4-Above 90%
- 3-70 to 89%
- 2-50 to 69%
- 1-30 to 49%
- 0-Below 29%

Q 20) Is the overall quality of teaching-learning process in your institute very good ?

- 4-Strongly agree
- 3-Agree
- 2-Neutral
- 1-Disagree
- 0-Strongly disagree

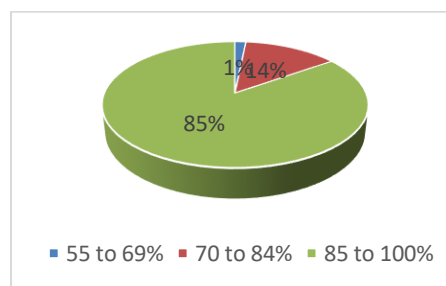
Q 21) Give observations / suggestions to improve the overall teaching – learning experience in your institution.

Survey Feedback From Students

The feedback obtained from students is analyzed and reported. Responses of 250 respondents was analyzed. SPSS software is used for analysis of the statistical data. The report prepared is used to identify weak points and take steps to improve them.

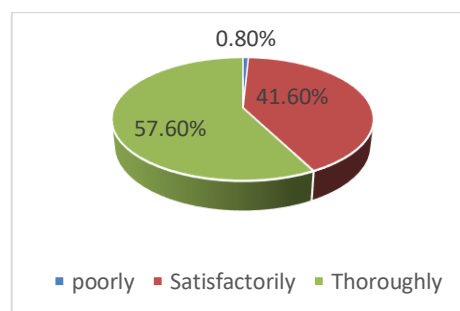
Q1) How much of the syllabus was covered in the class?

Particulars	Frequency	Percent	Mean	Rating
55 to 69%	4	1.6	3.83	Excellent
70 to 84%	34	13.6		
85 to 100%	212	84.8		
Total	250	100.0		



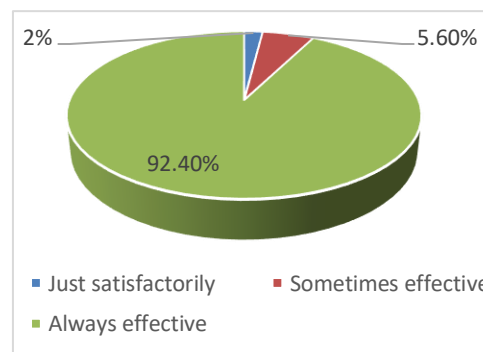
Q2) How well did the teachers prepare for the classes?

Particulars	Frequency	Percent	Mean	Rating
poorly	2	0.80%	3.57	Excellent
Satisfactorily	104	41.60%		
Thoroughly	144	57.60%		
Total	250	100		



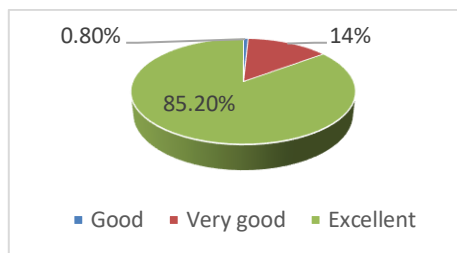
3) How well were the teachers able to communicate?

Particulars	Frequency	Percent	Mean	Rating
Just satisfactorily	5	2%	3.9	Excellent
Sometimes effective	14	5.60%		
Always effective	231	92.40%		
Total	250	100		



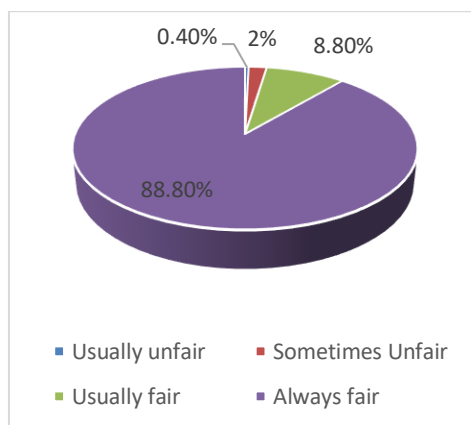
Q4) How will you rate the teacher's in depth knowledge of subject?

Particulars	Frequency	Percent	Mean	Rating
Good	2	0.80%	3.84	Excellent
Very good	35	14%		
Excellent	213	85.20%		
Total	250	100		



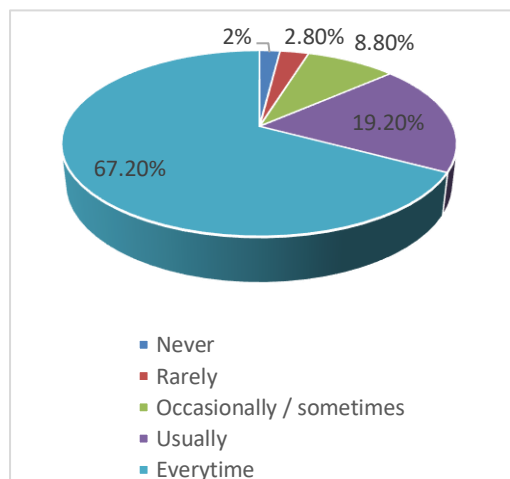
Q5) How fair was the internal evaluation process by the teachers?

Particulars	Frequency	Percent	Mean	Rating
Usually unfair	1	0.40%	3.86	Excellent
Sometimes Unfair	5	2%		
Usually fair	22	8.80%		
Always fair	222	88.80%		
Total	250	100		



Q6) Were the requirements and evaluation criteria of the course clearly defined ?

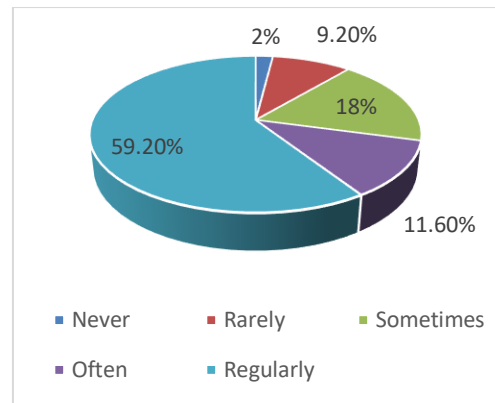
Particulars	Frequency	Percent	Mean	Rating
Never	5	2%	3.47	Excellent
Rarely	7	2.80%		
Occasionally / sometimes	22	8.80%		
Usually	48	19.20%		
Everytime	168	67.20%		
Total	250	100		



Q7) Does the institute take active interest in promoting exposure through educational trips?

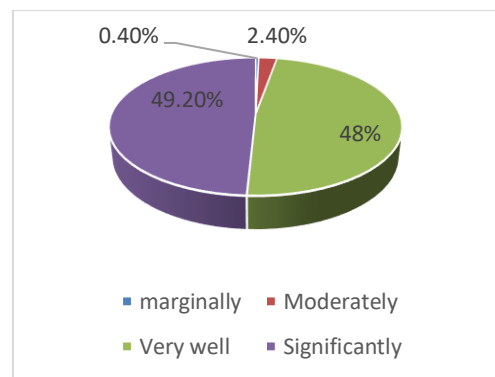
Particulars	Frequency	Percent	Mean	Rating
Never	5	2%	3.17	Excellent
Rarely	23	9.20%		

Sometim es	45	18%		
Often	29	11.60%		
Regularl y	148	59.20%		
Total	250	100		



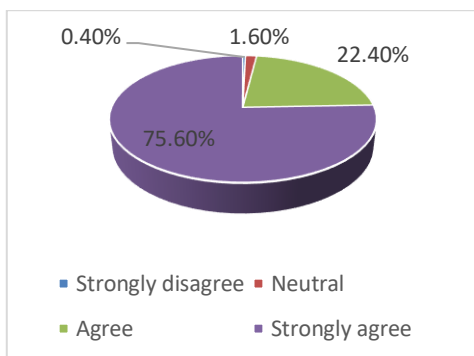
Q8) Is the teaching and learning process in your institution helpful in cognitive, social and emotional growth?

Particulars	Freq uency	Percent	Mean	Rating
marginally	1	0.40%	3.46	Excellen t
Moderately	6	2.40%		
Very well	120	48%		
Significantly	123	49.20%		
Total	250	100		



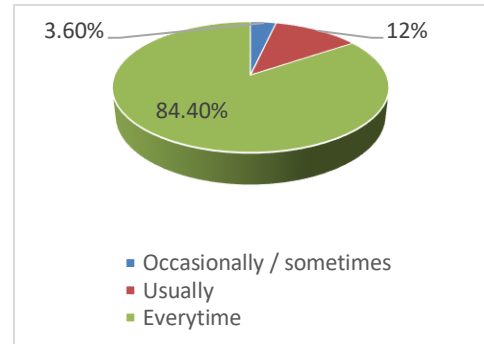
Q9) Does the institution provides multiple opportunities to learn and grow ?

Particulars	Freque ncy	Percent	Mean	Rating
Strongly disagree	1	0.40%	3.73	Excellen t
Neutral	4	1.60%		
Agree	56	22.40%		
Strongly agree	189	75.60%		
Total	250	100		



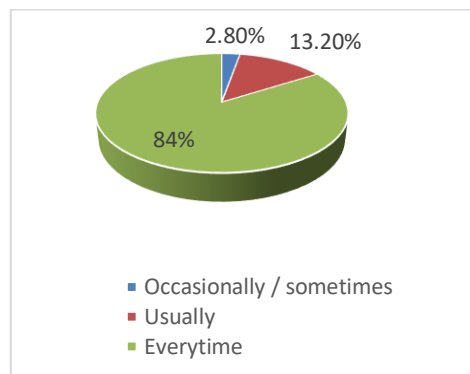
Q10) Do the teachers inform you about your expected competencies, course outcomes and program outcomes?

Particulars	Frequency	Percent	Mean	Rating
Occasionally / sometimes	9	3.60%	3.81	Excellent
Usually	30	12%		
Everytime	211	84.40%		
Total	250	100		



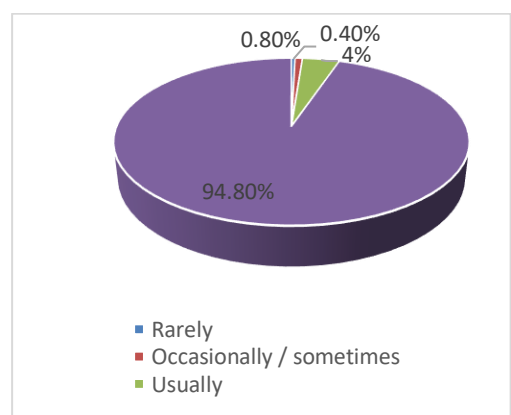
Q11) Does your teacher do a necessary follow up with an assigned task to you?

Particulars	Frequency	Percent	Mean	Rating
Occasionally / sometimes	7	2.80%	3.81	Excellent
Usually	33	13.20%		
Everytime	210	84%		
Total	250	100		



Q12) Do the teachers illustrate the concepts through examples and applications?

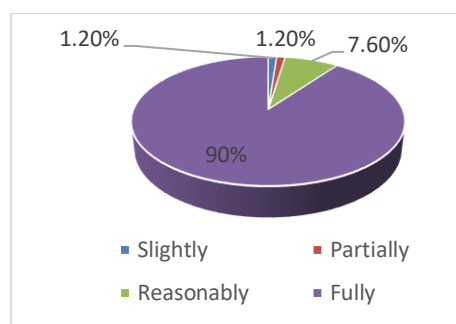
Particulars	Frequency	Percent	Mean	Rating
Rarely	1	0.40%	3.93	Excellent
Occasionally / sometimes	2	0.80%		
Usually	10	4%		
Everytime	237	94.80%		
Total	250	100		



Q13) Do the teachers identify your strengths and encourage you with providing right level of challenges?

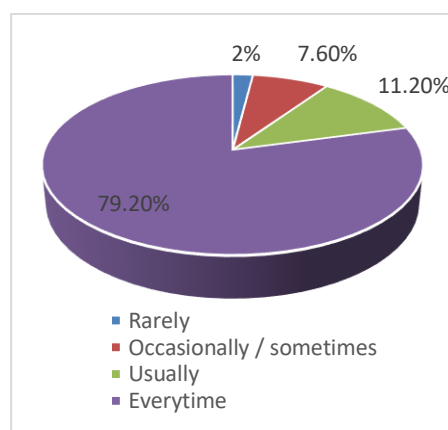
Particulars	Frequency	Percent	Mean	Rating
-------------	-----------	---------	------	--------

Slightly	3	1.20%	3.86	Excellent
Partially	3	1.20%		
Reasonably	19	7.60%		
Fully	225	90%		
Total	250	100		



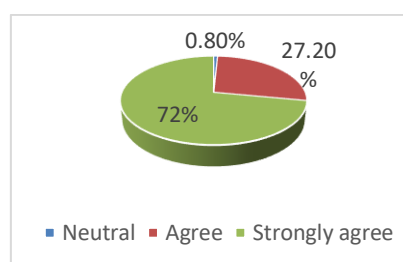
Q14) Are your teachers able to identify your weaknesses and help you to overcome them?

Particulars	Frequency	Percent	Mean	Rating
Rarely	5	2%	3.68	Excellent
Occasionally / sometimes	19	7.60%		
Usually	28	11.20%		
Everytime	198	79.20%		
Total	250	100		



Q15) Does the institution make effort to engage students in the monitoring, review and continuous quality improvement of the teaching learning process?

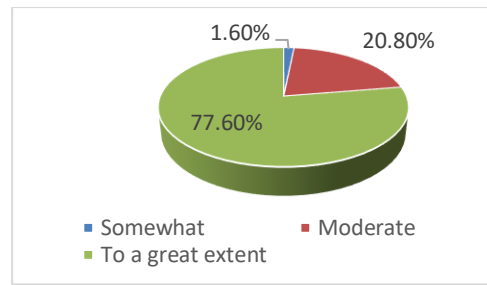
Particulars	Frequency	Percent	Mean	Rating
Neutral	2	0.80%	3.71	Excellent
Agree	68	27.20%		
Strongly agree	180	72%		
Total	250	100		



Q16) Do the teachers use student centric methods such as participative learning and problem solving methodologies for enhancing learning experiences?

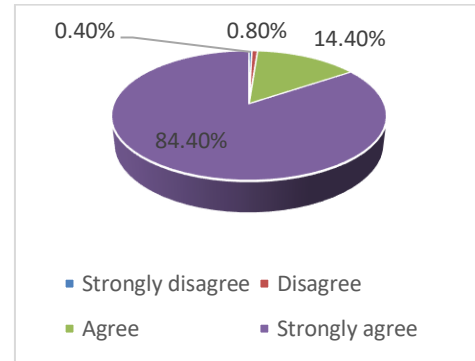
Particulars	Frequency	Percent	Mean	Rating
Slightly	4	1.60%	3.76	Excellent
Moderate	52	20.80%		
To a great extent	194	77.60%		

Total	250	100		
-------	-----	-----	--	--



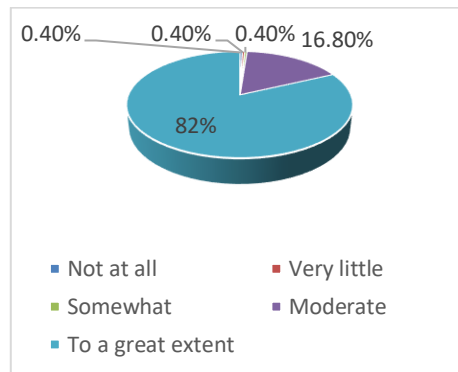
Q17) Do your teachers encourage you to participate in extracurricular activities ?

Particulars	Frequency	Percent	Mean	Rating
Strongly disagree	1	0.40%	3.82	Excellent
Disagree	2	0.80%		
Agree	36	14.40%		
Strongly agree	211	84.40%		
Total	250	100		



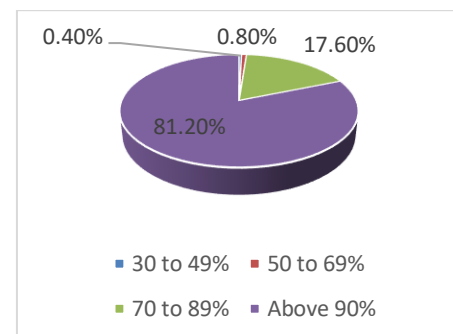
Q18) Are efforts made by the institute / teachers to inculcate soft skills, life skills and employability skills to make you ready for the world of work?

Particulars	Frequency	Percent	Mean	Rating
Not at all	1	0.40%	3.8	Excellent
Very little	1	0.40%		
Somewhat	1	0.40%		
Moderate	42	16.80%		
To a great extent	205	82%		
Total	250	100		



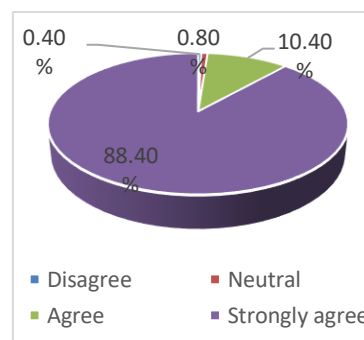
Q19) What percentage of teachers take up academic problems of the students beyond the classroom?

Particulars	Frequency	Percent	Mean	Rating
30 to 49%	1	0.40%	3.8	Excellent
50 to 69%	2	0.80%		
70 to 89%	44	17.60%		
Above 90%	203	81.20%		
Total	250	100		



Q 20) Is the overall quality of teaching-learning process in your institute very good?

Particulars	Frequency	Percent	Mean	Rating
Disagree	1	0.40%	3.87	Excellent
Neutral	2	0.80%		
Agree	26	10.40%		
Strongly agree	221	88.40%		
Total	250	100		



Survey Feedback From Students

Observation:

The mean score of all the parameters was above 3 and hence all the parameters were rated as “Excellent”.

Suggestions given by students:

- Educational tours should be organized more frequently
- Students demanded certificate courses.
- Need more awareness about job related scenario and improving employability.
- Demand for more use of digital classrooms.
- Even after frequent training sessions , students have demanded yet more training sessions regarding digital access to E-Library.
- Students insisted for Offline Mentorship Classes.

Strengths:

- Student centered Instruction(SCI)
- ICT-enabled modern teaching and learning environment supported by e-library and smart classrooms.
- Well-equipped laboratories.
- College has excellent extra-curricular activities, sports culture, well-organized extension, community service programs and outreach activities
- Functional IQAC, PTA and Alumni association
- Regular seminars/expert lectures/awareness programmes organized every year.

- Equality for girls to participate in all college activities.
- Student teacher interaction with emphasis on mentoring and counselling.
- Wide range of courses offered.
- Congenial, safe & secure environment for each and every girl student.